



Residential  
Systems



## Air for your home

The action of the TUBÒ system renews the air in your rooms: everything is clean and the air you breathe is healthy.



STOP  
▼

 **AERTECNICA**  
think clean

**TUBO**<sup>®</sup>  
 CENTRAL VACUUM SYSTEMS

The new  
conception  
of advanced  
vacuum  
systems.

# The new generation of TUBÒ central vacuum units: TXA - TPA - TP - TC

*Research, innovation, technology, reliability: Aertecnica's history has always been based on the desire to offer the highest quality products that symbolise Made in Italy workmanship.*



*Technology, design, practicality: a perfect balance*

The new Tubò system central vacuum units made by Aertecnica are completely designed and built in Italy, a philosophy which is the basis of all the projects we have developed in the last 30 years.

Consolidated manufacturing procedures and a strong commitment to research and development allow us to perfect and test all products in terms of technical, functional and aesthetic performance.

The new generation of central vacuum units in the TUBÒ line blends Aertecnica standards with the style and harmony that today's demanding market requires.

All this is the result of a constant commitment to test new technologies on a daily basis, to create healthier environments and more comfortable living spaces.

*Aertecnica: cleanliness and well-being for everyone.*



Simply perfect



*watch the video and discover the central vacuum units in the TUBÒ vacuum system*



## Perfetto Inox TXA line

### Not just beautiful

*The Perfetto Inox TXA line combines the best technical and functional features with the elegance of an advanced design and the endurance of AISI 304 stainless steel.*

These features are perfect for installations in which the machine must be positioned outside or in a place with particularly difficult environmental conditions.

*The Perfetto Inox TXA line achieves an optimum balance between technology, design and endurance, thanks to many functional features that help both the installation technician and the end user.*

#### *Design*

A new style and captivating image with strong lines. Real beauty, functional design and aesthetics that go beyond a simple trend. Durable materials.

#### *Dual air expulsion (right and left)*

A new feature that allows maximum flexibility of installation, regardless of the position of the central vacuum unit.

#### *IP electrical protection*

The TXA central vacuum units are certified with a high degree of protection based on the model (see technical charts).

#### *Silent operation*

Thanks to the use of new material and the optimisation of the motor's technical compartment, the noise level has been reduced even further.

#### *Instant AVI display*

Positioned on the front of the central vacuum unit. This is an instrument that provides clear indications that are easy to understand thanks to a set of icons and parameters that instantly signal the operational status of the central vacuum unit.

#### *ModBus communication system*

The TXA central vacuum units have a ModBus communication system that can be interfaced with the most common home automation systems.

#### *High degree of resistance to atmospheric agents*

The central vacuum unit is made of AISI 304 stainless steel, which not only creates an aesthetic impact, it also eliminates almost all deterioration caused by atmospheric agents and wear.

#### *Dual dust inlet*

Option to connect the tubing to the central vacuum unit on both the right and left sides.

#### *Built-in vacuum socket*

The TXA central vacuum units have a built-in vacuum socket on the front of the machine.

#### *APFSystem (Self-cleaning filter system)\*\**

An innovative and patented system that collects dust through vibration; standard equipment for the TXA line. It reduces maintenance work and keeps the central vacuum unit's suction capacity at optimal levels for longer.

#### *Quick Fix bracket*

The Quick Fix bracket with front attachment system makes installation possible in very small spaces and improves the stability of the wall mounting.

#### *Multifunctional side pockets*

Practical and convenient for storing the installation manual and spare bags. (not included with model TX1A)

#### *Ergonomic handles*

The handles make it easier to open and unhook the dust container.

#### *Clean Bag*

Dust collection bags with an air-tight closing system that completely prevents direct contact with the dust.

#### *Dust container*

A simplified hooking and unhooking system, with the option to partially open the container to activate the Clean Bag air-tight closing system.

#### *Clean Bag locking system*

Rapid system for attaching the Clean Bag to the dust container with pressure clips.

Aertecnica combines aesthetics with technical sophistication to satisfy the end user, without forgetting the needs of installation professionals.

Europe Patent Pending no. 06793421.6



Model	TX1A
Code	CMTX1A
Recommended surface area $m^2$	250*
Recommended no. of sockets	6*



Model	TX2A
Code	CMTX2A
Recommended surface area $m^2$	400*
Recommended no. of sockets	10*



Model	TX3A
Code	CMTX3A
Recommended surface area $m^2$	550*
Recommended no. of sockets	18*



Model	TX4A
Code	CMTX4A
Recommended surface area $m^2$	700*
Recommended no. of sockets	25*

\*Data recommended by the manufacturer.



\*IP55 channelled air expulsion based on model  
IP43 direct expulsion from the central vacuum unit.





## Peretto TPA - TP line

The evolution of the concept of vacuuming

*The Peretto TPA - TP line represents a new conception of advanced vacuum systems.*

It is a versatile and user-friendly work tool that was created to satisfy the functional needs of our dynamic and modern customers, allowing both the installation technician and end user to interact with the machine in a simple and direct manner.

*Aertecnica boasts 25 years of experience that has constantly produced high quality research and technology, guaranteeing installation technicians a silent and reliable product that is quick to install and requires little maintenance.*

In addition to the features already included on previous lines (tangential inlet, SOFT START system, washable filter and temperature sensor), the Peretto TPA and TP line offers a series of technical features that make the system even more efficient and practical.

### *Functionality-oriented design*

The Peretto TPA - TP line achieves an optimum balance between technology and design, thanks to many functional features that help both the installation technician and the end user.

### *Design*

New and captivating style with strong lines. Real beauty, functional design and aesthetics that go beyond a simple trend. Durable materials.

### *Dual air expulsion (right and left)*

A new feature that allows maximum flexibility of installation, regardless of the position of the central vacuum unit.

### *IP electrical protection*

The TPA - TP central vacuum units are certified with a high degree of protection based on the model (see technical charts).

### *Silent operation*

Thanks to the use of high quality materials and the optimisation of the motor's technical compartment, the noise level has been reduced even further.

### *Instant AVI display*

Positioned on the front of the central vacuum unit, this is an instrument that provides clear indications that are easy to understand thanks to a set of icons and parameters that instantly signal the operational status of the central vacuum unit.

### *ModBus communication system*

The TPA and TP central vacuum units are equipped with a ModBus communication system that can be interfaced with the most common home automation systems.

### *High degree of resistance to atmospheric agents*

The central vacuum unit is made from highly resistant material that has been applied with a coating that is guaranteed and certified for 1000 hours of saline mist. It can also be installed outside.

### *Dual dust inlet*

Option to connect the tubing to the central vacuum unit on both the right and left sides.

### *Built-in vacuum socket*

The TPA and TP central vacuum units have a built-in vacuum socket on the front of the machine.

### *APF system (Self-cleaning filter system)*

An innovative and patented system that collects dust through vibration. It reduces maintenance work and keeps the central vacuum unit's suction capacity at optimal levels for longer. (TPA models only)

### *Quick Fix bracket*

This bracket with front attachment system makes installation possible in very small spaces and improves the stability of the wall mounting.

### *Multifunction side pockets*

Convenient and practical for storing the installation manual and spare bags. (Not included with models TP1A - TP1)

### *Ergonomic handles*

The handles make it easier to open and unhook the dust container.

### *Clean Bag*

Dust collection bags with an air-tight closing system that completely prevents direct contact with the dust.

TUBO | Peretto TP3

### Dust container

A simplified hooking and unhooking system, with the option to partially open the container to activate the Clean Bag air-tight closing system.

### Clean Bag locking system

Rapid system for attaching the Clean Bag to the dust container with pressure clips.

*Aertecnica combines technical sophistication with ease of use and ease of installation, placing itself at the service of installation technicians.*

The APF system is available on the TXA and TPA models.  
Europe Patent Pending no. 06793421.6



Model	TP1A   TP1
Code	CMP1A   CMP1
Recommended surface area $m^2$	250*
Recommended no. of sockets	6*

Model	TP2A   TP2
Code	CMP2A   CMP2
Recommended surface area $m^2$	400*
Recommended no. of sockets	10*

Model	TP3A   TP3
Code	CMP3A   CMP3
Recommended surface area $m^2$	550*
Recommended no. of sockets	18*

Model	TP4A   TP4
Code	CMP4A   CMP4
Recommended surface area $m^2$	700*
Recommended no. of sockets	25*

\*Data recommended by the manufacturer.



\*IP55 channelled air expulsion based on model  
IP43 direct expulsion from the central vacuum unit.





## Classic TC line

### Simple and beautiful

#### *AerTECNICA offers a line of models suited to everyone's needs.*

The Classic TC line is a "basic" line that offers the main technical features essential to the central vacuum units in the TUBO system.

*Simplicity combined with AerTECNICA standards: The TC Classic offers some of the technological innovations featured in the most advanced models.*

#### *Design*

An image with a simple design, which maintains the lines of the TUBO system central vacuum units. Durable materials.

#### *Dual air expulsion (right and left)*

Allows maximum flexibility of installation, regardless of the position of the central vacuum unit

#### *IP electrical protection*

The central vacuum units in the TC line are certified with a high degree of protection based on the model (see technical charts)

#### *Silent operation*

Thanks to the use of high quality materials and the optimisation of the motor's technical compartment, the noise level has been reduced even further.

#### *Timed AVT display*

Positioned on the front of the central vacuum unit, this is an LED display panel that allows you to constantly monitor the operating status of the central vacuum unit.

#### *ModBus communication system*

TC central vacuum units are equipped with a ModBus communication system that can be interfaced with the most common home automation systems.

#### *High degree of resistance to atmospheric agents*

The central vacuum unit is made from highly resistant material that has been applied with a coating that is guaranteed and certified for 1000 hours of saline mist. It can also be installed outside.

#### *Dual dust inlet*

Option to connect the tubing to the central vacuum unit on both the right and left sides.

#### *Quick Fix bracket*

This bracket with front attachment system makes installation possible in very small spaces and improves the stability of the wall mounting.

#### *Ergonomic handles*

The handles make it easier to open and unhook the dust container.

#### *Dust container*

Simplified hooking and unhooking system.

#### *An ideal solution for the simplest requirements at home or at work.*



Model	TC1
Code	CMTC1
Recommended surface area $m^2$	250*
Recommended no. of sockets	6*

\*Data recommended by the manufacturer.

Model	TC2
Code	CMTC2
Recommended surface area $m^2$	400*
Recommended no. of sockets	10*

Model	TC3
Code	CMTC3
Recommended surface area $m^2$	550*
Recommended no. of sockets	18*

Model	TC4
Code	CMTC4
Recommended surface area $m^2$	700*
Recommended no. of sockets	25*



\*IP55 channelled air expulsion based on model IP43 direct expulsion from the central vacuum unit.



# Perfect... inside and out

- a**
  - Dual air expulsion (right and left)
  - High degree of electrical protection according to model (see technical data)
  - Evolution Card 1.0
  - Electric motor
  - Temperature sensor
  - Sound-proofed chamber
  - AVI Display
  - Modbus communication system
- b**
  - Dual dust inlet (right and left)
  - Built-in vacuum socket
  - Precision filter cartridge
  - APF System
  - Quick Fix bracket
  - Multifunctional side pockets
- c**
  - Ergonomic handles
  - Conveying cone
  - Clean Bag dust bag
  - Easy dust container hooking/unhooking
  - Clean Bag locking system



## APF system

### Self-cleaning filter system

The APF system is available on the PERFETTO, TXA and TPA models.  
Europe Patent Pending no. 06793421.6

\* The APF System is an innovative and patented system that uses vibration to reduce dust.

\* The self-cleaning system is self-powered by the air drawn into a containment chamber equipped with a helicoidal turbine. A mechanical device connected to this vibrates the cartridge, allowing the dust to fall into the collection container.

\* It reduces maintenance work on the filter and keeps the central vacuum unit's suction capacity at optimal levels for longer.

## a The heart of the system

### 1 Dual air expulsion (right/left)

Allows maximum flexibility of installation, whatever the position of the central vacuum unit.

### 2 Protection rating

The central vacuum unit is made from highly resistant material that has been applied with a coating that is guaranteed and certified for 1000 hours of saline mist. Can be installed anywhere, both outside and inside. High degree of protection according to model. (see technical chart)

### 3 Evolution Card 1.0

This circuit board is the heart of the whole system, it drives the motor start-up and the AVI display. A special programme communicates with the display, which uses icons and parameters to signal the operational state of the central vacuum unit. (standard equipment for TXA - TPA - TP models)

### 4 Electric motor

Protected, insulated and sound-proofed. Highly professional, guaranteeing elevated performance. 100% Italian technology.

### 5 Temperature sensor

Monitors the operation of the central vacuum unit and intervenes in the event of malfunctions caused by incorrect usage.

### 6 Sound-proofed chamber

Built with technologically advanced materials, the channelling circuits use special geometries to further lower the acoustic emissions of the central vacuum unit, allowing you to use it at any time of day.

### 7 Instant AVI display

Positioned on the front of the central vacuum unit. This device is characterised by a cutting edge design with very simple parameters and icons. (only with Perfetto INOX TXA | Perfetto TPA | Perfetto TP lines)

### 8 Modbus communication system

A generic ModBus protocol has been implemented in the central vacuum unit, which allows it to be interfaced with the most common home automation systems.



\*IP55 channelled air expulsion based on the model (see technical data)  
IP43 direct expulsion from the central vacuum unit.

## b Vacuum everywhere

### 9 Dual dust inlet (right and left)

A great advantage for the installation technician. Ensures maximum flexibility of assembly of the central vacuum unit in every position, making installation faster.

### 10 Built-in vacuum socket

A socket built into the central vacuum unit body allows the system to be used also in the room it is installed in. This increases versatility and practicality. (standard equipment for TXA – TPA – TP models)

### 11 Precision filter cartridge

An innovative product made of washable material with high filtering efficiency. Equipped with an alignment and fastening system, which makes installation and maintenance easier.

### 12 APF system

The APF system (Self-cleaning filter) noticeably reduces filter maintenance, and allows the central vacuum unit to operate at optimal levels for longer, thanks to a filter that is always clean. The APF System is an Aertecnica patent that uses the air aspirated by the motor to activate a fan that starts a vibration mechanism acting upon the filter. This system makes even the finest dust particles fall into the collection container. (standard equipment for TXA – TPA models)

### 13 Quick Fix bracket

Bracket with front attachment for a larger support surface. Requires minimal installation space and offers greater stability in securing the central vacuum unit to the wall.

### 14 Multifunctional side pockets

Convenient and practical for storing frequently used objects such as bags and instruction/maintenance manuals. (not included with TX1A, TP1A, TP1 models and Classic TC line)



\*IP55 channelled air expulsion based on the model (see technical data)  
IP43 direct expulsion from the central vacuum unit.

## c Everything is easy with Perfetto

### 15 *Conveying cone*

This is built-in and secured to the machine body. It improves and speeds up the Clean Bag closure. Thanks to its new deeper shape, more dust can be collected without it spreading throughout the machine body. The filter is kept clean in this way, providing longer-lasting performance.

### 16 *Dust container*

The container is made of highly durable material. A rapid hooking/unhooking system for the Clean Bag has been installed internally. Ergonomic handles have been secured to the sides for easier opening and closing of the Clean Bag.

### 17 *Ergonomic handles*

Charming and functional. Two opening positions:

- The first partially unhooks the container from the machine body, allowing the closure of the Clean Bag and completely avoiding contact with dust.
- The second completely unhooks the container from the machine body for all ordinary maintenance operations.

### 18 *Clean Bag locking system*

A system is installed inside the dust container (on the bottom plate) that makes it possible to hook the Clean Bag to the dust container using pressure clips.

### 19 *Clean Bag dust bag*

Thanks to the handle system, replacing the Clean Bag is fast and easy and above all 100% hygienic, providing the user with a hermetic closure that completely avoids any contact with dust. (Classic TC line excluded)



\*IP55 channelled air expulsion based on the model (see technical data)  
IP43 direct expulsion from the central vacuum unit.

# AVI Display and Dynamic Control Display: everything under control

*AerTECNICA's advanced TUBÒ vacuum systems are an integral part of the tools that make our living spaces healthier and more comfortable.*

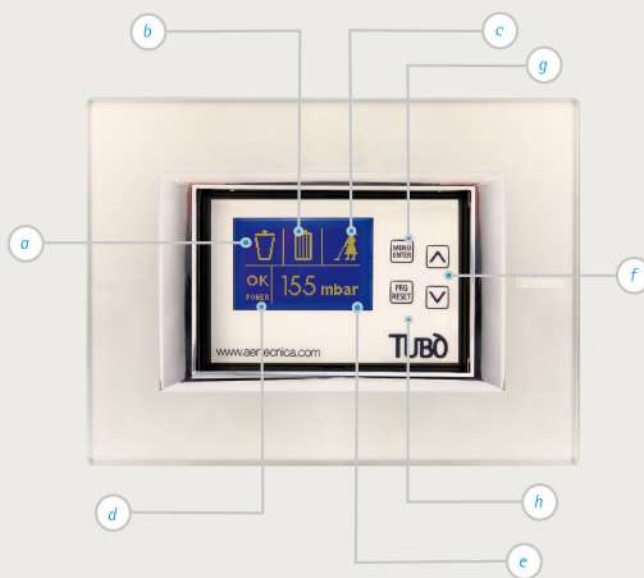
The instant AVI display\* is AerTECNICA's answer to home automation, consisting of a remote Dynamic Control Display, which can be positioned in any part of the building.

*The Dynamic Control Display is aesthetically similar to any other electrical switch, allowing for perfect architectural integration.*

Both the AVI display as well as the Dynamic Control Display offer a global overview of the operating parameters via clear and comprehensible icons that report any malfunctions or blocks, any required maintenance and the status of the central vacuum unit during operation.

The Dynamic Control Display, Code CMT800, is an instrument that provides clear indications that are easy to understand. It uses a set of icons and parameters that instantly report the operational status of the central vacuum unit. It is equipped with a reset function that automatically resets the system without having to access the machine in the event of a malfunction.

*The Dynamic Control Display automatically configures itself to the type of central vacuum unit it is connected to.*



## DYNAMIC CONTROL DISPLAY

- a** Clean Bag full
- b** Precision filter cartridge saturated
- c** Central vacuum unit ON indicator
- d** Operating vacuum level indicator
- e** Operating parameter display (operating vacuum)
- f** Navigation buttons
- g** Menu button
- h** Reset button

# Technical table for new generation single-phase central vacuum units

Line		PERFETTO INOX TXA				PERFETTO TPA   TP				CLASSIC TC			
Model		TX1A *	TX2A *	TX3A *	TX4A *	TP1A * TP1	TP2A * TP2	TP3A * TP3	TP4A * TP4	TC1	TC2	TC3	TC4
Power supply	Volts (Vac)	220/240	220/240	220/240	220/240	220/240	220/240	220/240	220/240	220/240	220/240	220/240	220/240
Motor power	Watts (W)	1.260	1.600	1.350	1.590	1.260	1.600	1.350	1.590	1.260	1.600	1.350	1.590
Frequency	HZ	50/60	50/60	50/60	50/60	50/60	50/60	50/60	50/60	50/60	50/60	50/60	50/60
Electrical protection grade	IP	IP55 <sup>1</sup>	IP55 <sup>1</sup>	IP45 <sup>2</sup>	IP45 <sup>2</sup>	IP55 <sup>1</sup>	IP55 <sup>1</sup>	IP45 <sup>2</sup>	IP45 <sup>2</sup>	IP55 <sup>1</sup>	IP55 <sup>1</sup>	IP45 <sup>2</sup>	IP45 <sup>2</sup>
Motor rpm	rpm	43.507	46.480	29.892	31.672	43.507	46.480	29.892	31.672	43.507	46.480	29.892	31.672
Noise level	db	62,5	63	64	64,5	62,5	63	64	64,5	62,5	63	64	64,5
Turbine stages	no.	1	1	3	3	1	1	3	3	1	1	3	3
Socket power supply	Volts (V)	12	12	12	12	12	12	12	12	12	12	12	12
Vacuum power	Air Watts	504	653	526	566	504	653	526	566	504	653	526	566
Air flow rate	m <sup>3</sup> /h	207	195	174	168	207	195	174	168	207	195	174	168
Max. vacuum	mbar	270	313	374	415	270	313	374	415	270	313	374	415
Filter cartridge surface area	cm <sup>2</sup>	4.000	8.200	12.300	12.300	4.000	8.200	12.300	12.300	4.000	8.200	12.300	12.300
Filter cartridge material		POLYESTER				POLYESTER				POLYESTER			
Container capacity	litres	13,5	13,5	22	22	13,5	13,5	22	22	13,5	13,5	22	22
Height	cm	60	90	115	115	60	90	115	115	60	90	115	115
Diameter	cm	30	30	34	34	30	30	34	34	30	30	34	34
Weight	kg	10,8	13,8	17,3	17,3	10,8 9,8	13,8 12,8	17,3 16,3	17,3 16,3	9,5	12,2	15,3	15,3
Dust container	Material	PLASTIC				PLASTIC				PLASTIC			
Dome	Material	PLASTIC				PLASTIC				PLASTIC			
Compatibility with Dynamic Control Display code CMT800		YES	YES	YES	YES	YES	YES	YES	YES	YES	YES	YES	YES
Compatibility with Wireless system code CM187		YES	YES	YES	YES	YES	YES	YES	YES	YES	YES	YES	YES
Soft Start		YES	YES	YES	YES	YES	YES	YES	YES	YES	YES	YES	YES
Right and left dust inlet		YES	YES	YES	YES	YES	YES	YES	YES	YES	YES	YES	YES
Right and left air expulsion		YES	YES	YES	YES	YES	YES	YES	YES	YES	YES	YES	YES
AVI display (**)		YES	YES	YES	YES	YES	YES	YES	YES	NO	NO	NO	NO
AVT panel (***)		NO	NO	NO	NO	NO	NO	NO	NO	YES	YES	YES	YES
MODBUS communication system		YES	YES	YES	YES	YES	YES	YES	YES	YES	YES	YES	YES
QUICK FIX bracket		YES	YES	YES	YES	YES	YES	YES	YES	YES	YES	YES	YES
APF system (****)		YES	YES	YES	YES	YES NO	YES NO	YES NO	YES NO	NO	NO	NO	NO
Built-in vacuum socket		YES	YES	YES	YES	YES	YES	YES	YES	NO	NO	NO	NO
CLEAN BAG		YES	YES	YES	YES	YES	YES	YES	YES	NO	NO	NO	NO
Multifunctional pockets		NO	YES	YES	YES	NO	YES	YES	YES	NO	NO	NO	NO
Silencer as standard		NO	YES	YES	YES	NO	YES	YES	YES	NO	YES	YES	YES
Max no. of sockets	no.	6	10	18	25	6	10	18	25	6	10	18	25
Distance of furthest socket	m	25	30	40	50	25	30	40	50	25	30	40	50
Manufacturer's recommended surface area	m <sup>2</sup>	250	400	550	700	250	400	550	700	250	400	550	700



## Certifications

The line of civil sector single-phase central vacuum units Perfetto Inox TXA, Perfetto TPA, Perfetto TP, Classic TC, QB and Bravo is certified:



<sup>1</sup> IP55 Conveyed expulsion with expulsion pipe /  
IP43 Direct expulsion from the central vacuum unit, without expulsion pipe  
<sup>2</sup> IP45 Conveyed expulsion with expulsion pipe /  
IP43 Direct expulsion from the central vacuum unit, without expulsion pipe

\* Model with APF system as standard  
\*\* Instant AVI Display

\*\*\* Timed display AVT Panel  
\*\*\*\* APF self-cleaning filter system.







## Studio TS line

New central vacuum units with

Silent operation

Ergonomics

Soft Start

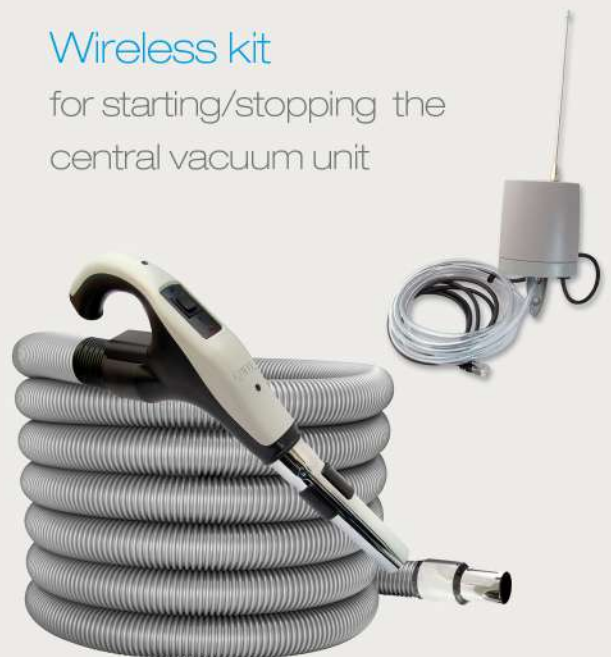


Remote control with

REMOTE Panel

## Wireless kit

for starting/stopping the  
central vacuum unit





Model	TS1
Code	CMTS1
Recommended surface area $m^2$	250*
Recommended no. of sockets	6*

Model	TS2
Code	CMTS2
Recommended surface area $m^2$	400*
Recommended no. of sockets	10*

Model	TS4
Code	CMTS4
Recommended surface area $m^2$	700*
Recommended no. of sockets	25*

\*\*Data recommended by the manufacturing company.

		TS1	TS2	TS4
Power supply	Vac	220/240	220/240	220/240
Motor power	W	1.260	1.600	1.650
Motor rpm	rpm	43.507	46.480	31.014
Vacuum power	Air Watts	504	653	690
Air flow rate	$m^3/h$	207	195	238
Vacuum	mbar	270	313	320
Noise level	dB	57	55,6	58
Filter cartridge surface area	$cm^3$	4.000	8.000	8.000
Filter cartridge material	POLYESTER			
Dust container capacity	litres	15	15	23
Height	cm	64	90	103
Diameter	cm	28	28	32
Weight	kg	13	16	18
Compatibility with Wireless system (CM186)	YES			
SOFT START	YES			



# QB

Technology that simply evolves.

*QB complies with EC directives on safety, efficiency and electromagnetic compatibility. Aertecnica's manufacturing procedures are structured to reduce environmental impact, limiting energy use and excess industrial waste.*



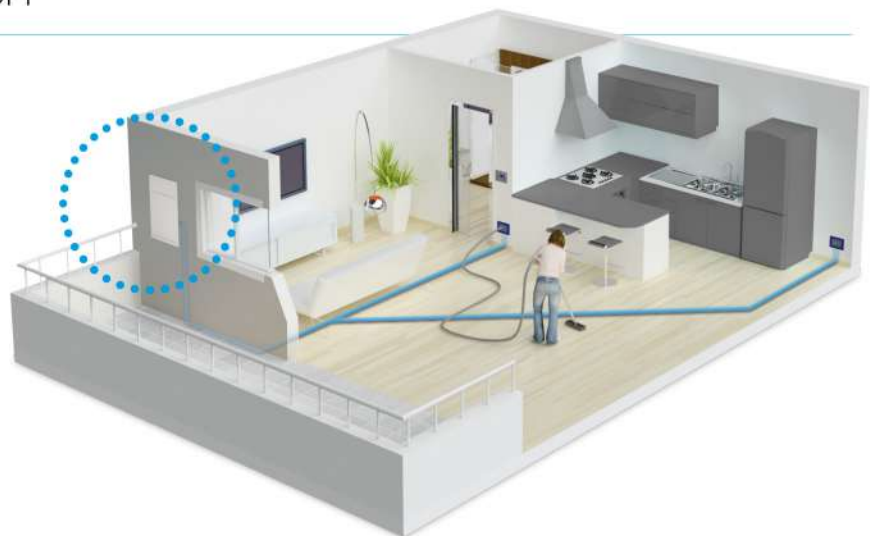
*watch the video and see how QB works*

## QB outdoor solution

*Attention to space, aesthetics and energy savings.*

QB can be installed anywhere without compromising the technical features of a traditional centralised vacuum system.

QB completely neutralises the visual impact of traditional interior or exterior central vacuum units: the growing demands of the world of design and working in constant synergy with architects led Aertecnica to develop a product that would satisfy the aesthetic demands of end customers, without compromising technology or ease of installation.



# QB the central vacuum unit

*Versatility, efficiency and ease of assembly: QB, the first central vacuum unit that can be either built-in or wall-mounted, is a new development that further enriches TUBÒ, the centralised vacuum system.*



*Innovative and completely accessible for inspection.*

It has a cyclonic compartment with deflectors for channelling the dust and an oval filter cartridge with a high filtering capacity. A single element encloses and isolates the central vacuum unit with a magnetic fastening system that speeds up maintenance operations. QB is a highly innovative and patented product that features the very best of Aertecnica technology. It is compliant with acoustic and thermal standards without compromising on **the energy efficiency class or the acoustic and thermal insulation of the structure.**

*QB Q200 Aertecnica patented central vacuum unit\**

- a revolutionary central vacuum unit
- maximum vacuum power
- cyclonic dust collection compartment and removable, eco-friendly cardboard dust container
- absolutely silent (dB 58)
- simplified maintenance
- highest electrical protection class (IP55)<sup>1</sup>
- reduced footprint

Model	Q200
Code	CM200Q
Description	Central vacuum unit QB Q200
Recommended surface area	m <sup>2</sup> 400
Max. number of sockets*	10

\*Data recommended by the manufacturer.

<sup>1</sup>Patent Pending N°. M02007A000077 | <sup>1</sup> IP55 with channelled air expulsion / IP45 with air expulsion from the flap.

# QB indoor solution

*A perfect balance between technological innovation and design.*

*The central vacuum unit disappears, just like the dust.*

*QB eliminates the visual impact of traditional central vacuum units.*

QB with built-in enclosure is the solution to modern building needs. It can be completely built into the wall to save space and maintain the building's aesthetics.

The flap is the only visible element and this can be painted to match the colour of the wall, making it almost invisible.



# QB with built-in enclosure

*The central vacuum unit disappears, just like the dust.*

QB with built-in enclosure is the solution to modern building needs. It can be completely built into the wall to save space and maintain the building's aesthetics. The visible flap can be painted the colour of the wall, making it almost invisible.



## QB with built-in enclosure

### New Design

The new design is easy on the eye. Light, elegant and minimal, it is characterised by a balance of details that make the new QB a perfect fusion of style and technology.

This is not all: the enclosure and flap can be painted to match the walls. In this way the QB becomes a discreet presence that integrates easily into your home.

### Super silent operation

The new QB is a perfect combination of elements that when assembled together ensure minimum noise levels, allowing you to use the central vacuum unit at any time of day.

**QB is compliant with acoustic and technical standards without compromising on the energy efficiency class or the acoustic and thermal insulation of the structure.**

### Simple and quick to maintain

Thanks to the revolutionary elliptical cyclonic filtration system (patented), QB compacts the dust to reduce maintenance operations to a minimum.

With the new QB, cleaning the filter and emptying the dust is easier and quicker than ever. To reduce the size even further, the device is opened from the front; just remove the flap to access the central vacuum unit. A simple and rapid gesture.



Code	CM021Q
Description	BUILT-IN enclosure in high-strength plastic for QB central vacuum unit <ul style="list-style-type: none"> <li>Built-in enclosure for QB Q200 central vacuum unit, complete with temporary flap for masonry work and set-up for electrical connection</li> <li>Aer TECNICA Patent Pending N°. M02007A000077</li> </ul>

Code	CM321Q
Description	Insulation for BUILT-IN enclosure in high-strength plastic (code CM021Q) for QB central vacuum unit (code CM200Q)   Optional

Code	CM821Q
Description	Frame and flap kit for BUILT-IN enclosure in high-strength plastic (code CM021Q). <ul style="list-style-type: none"> <li>The kit includes the final frame and flap for sealing the BUILT-IN enclosure in high-strength plastic (code CM021Q).</li> </ul>



## Features

### *Small size, advanced performance.*

Smaller size and higher performance materials, these are the elements that characterise the new QB enclosure. In order to meet the space requirements of the modern construction industry, the enclosure of the new QB is smaller than before and employs high-efficiency thermoplastic materials. In this way, installation is even easier and more versatile than before.

The new QB enclosure is supplied with a temporary flap to preserve the plasterwork (a1). Standard 2 cm thick polystyrene insulation can be supplied on request to further improve the acoustic and thermal insulation (a2).

### *The new enclosure*

a1. temporary flap to preserve plasterwork  
a2. built-in enclosure  
a3. insulation

### *The central vacuum unit*

b1. motor compartment  
b2. patented filtration system  
b3. ecological dust container

### *Frame and flap kit*

c1. frame  
c2. flap



# QB with wall-mounted enclosure

*The QB wall-mounted enclosure is a solution for completing traditional vacuum systems*

QB can be installed anywhere thanks to the wall-mounted enclosure, without compromising the technical features of a traditional centralised vacuum system. It can also be used to complete traditional set-ups for centralised vacuum systems.

## QB with wall-mounted enclosure

Can be installed anywhere, both outside or inside the building. **Can be used as a more compact alternative to complete traditional** set-ups for centralised vacuum systems. Complete with the material needed for installing the QB central vacuum unit.

- Can be installed as part of pre-existing set-ups for traditional centralised vacuum systems.
- Made from heat treated, shaped sheet metal coated with epoxy paint certified for 1000 hours in saline mist.
- Maximum protection against atmospheric agents (IP55)\*
- Total depth cm 23,5
- Flap with reversible opening (RH - LH)
- Set up for electrical connection.

Code	CM020Q
Description	WALL-MOUNTED enclosure for QB Q200

Code	CM220Q
Description	QB WALL-MOUNTED kit (includes QB200 and wall-mounted enclosure)



The QB wall-mounted enclosure is a conventional alternative to the built-in solution and guarantees the same functionality and efficiency.

*QB can be installed anywhere thanks to the wall-mounted enclosure, with the same technical features: silent operation, high degree of protection, cyclonic dust collection system.*

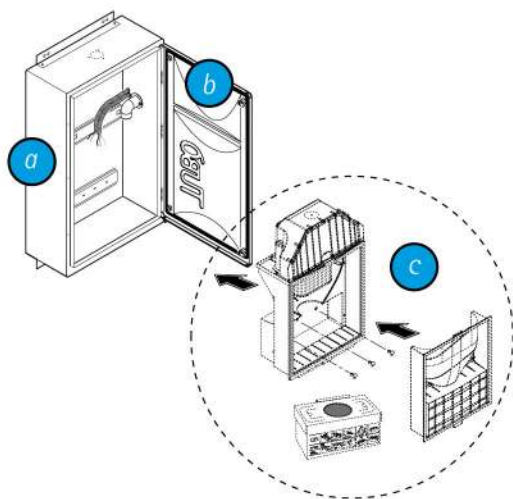


\*IP55 with channelled air expulsion IP45 with air expulsion from the flap





## Features



### **a** Wall-mounted enclosure

Enclosure made from heat-treated, shaped sheet metal coated with epoxy paint certified for 1000 hours in saline mist. Offers maximum protection against atmospheric agents (IP55)\*. It has a total depth of 23.5 cm (including the flap). It is set up for electrical connection, making installation of the central vacuum unit easier.

### **b** Flap

With reversible opening. It has a special slot for air expulsion for outdoor installations. It is provided with a seal that couples it with the enclosure.

### **c** Central vacuum unit QB Q200

Innovative and completely accessible for inspection. It has a tangential inlet and cyclonic compartment with deflectors for channelling dust and an oval filter cartridge with a superior filtering capacity.

A single element closes and isolates the central vacuum unit with a magnetic fastening system that speeds up maintenance operations and guarantees lower noise levels.



### Wall-mounted QB enclosure

Its shape means it can also be installed under brick terrace structures.

## Central vacuum unit QB Q200

The QB Q200 central vacuum unit can be wall-mounted, like normal Tubò central vacuum units, or built-in in a metal enclosure with a reversible hatch installed during the system installation process.

*The main features of QB Q200 are:*

- Wall-mounted installation, like normal central vacuum units
- Built-in installation
- Installed when the system is being installed
- Vacuum motor with electronic Soft Start, housed in a specific soundproof compartment.

- Electronic circuit board with transformer from 230 to 12 Volts for electric socket line and EC standard compliant EMC anti-interference filter.
- Tangential dust inlet and cyclonic system with deflectors to channel dust into the container.
- Ecological, removable dust collector, equipped with adhesive closing device to guarantee maximum hygiene.
- Washable polyester filter cartridge with large filtering surface area.
- Built-in safety valve.
- Maintenance from the front with a hook mechanism opening system facilitated by magnets to speed up ordinary maintenance operations and provide maximum practicality.



- System for securing the QB Q200 central vacuum unit to its enclosure using a system of screws that operate from inside the central vacuum unit.
- Reduced noise (58 db) and electric protection class IP55<sup>1</sup> (with channelled air expulsion).

### QB central vacuum unit technical specifications

Power supply	Volts	230
Motor power	W	1.600
Motor rpm	rpm	46.480
Soft Start		yes
Turbine stages	n°	1
Socket power supply voltage	Volts	12
Vacuum power	air watts	653
Frequency	Hz	50/60
Max air flow rate	m <sup>3</sup> /h	195
Maximum vacuum	mbar	313

Filter cartridge surface area	cm <sup>2</sup>	6.500
Filter cartridge material		polyester
Enclosure capacity	litres	13
Remote panel compatibility (Dynamic / Kit)		optional
Max. recommended number of sockets	n°	10
Recommended surface area	m <sup>2</sup>	400

		With built-in enclosure*	With wall-mounted enclosure
Height <sup>2</sup>	cm	83,2	85
Width <sup>2</sup>	cm	54,5	52
Depth <sup>2</sup>	cm	26,1	23,5
Noise level	db	55,8	58
Electrical protection class <sup>1</sup>	IP	IP55 <sup>1</sup>	IP55 <sup>1</sup>
Weight <sup>2</sup>	kg	16	14



<sup>1</sup>IP55 with channelled air expulsion / IP45 with air expulsion from the flap.

<sup>2</sup>Measurements including the central vacuum unit enclosure.

\*High-strength material

## Optional for QB Q200 central vacuum unit



Description	<p>Remote panel kit for QB central vacuum units complete with electrical switch plate.</p> <p>Comprised of:</p> <ul style="list-style-type: none"> <li>• Plug socket with indicator n°. 1,</li> <li>• 12V cable for connection to the</li> <li>• Central vacuum unit n°. 1,</li> <li>• Remote panel n°. 1,</li> <li>• Mount for remote panel n°. 1,</li> <li>• Vimar Plana electrical switch plate (white granite) n°. 1,</li> <li>• 4 mm thick Plexiglas plate for panel</li> <li>• Remote on Vimar Plana n°. 1</li> </ul>
-------------	---



Description	<p>The Dynamic Control Display is an instrument that provides clear indications that are easy to understand. It uses a set of icons and parameters that instantly report the operational status of the central vacuum unit. It is equipped with a reset function that automatically resets the system without having to access the machine in the event of a malfunction. The Dynamic Control Display automatically configures itself to the type of central vacuum unit it is connected to. Compatible with the QB model when LM mode is selected.</p>
-------------	---





# Pratico

Cleaning has never  
been so easy.



watch the video and see  
how PRATICO works



## Unparalleled practicality.

### *Faster and simpler cleaning.*

PRATICO is a new solution for simplifying the cleaning of rooms equipped with the TUBO centralised vacuum system, making cleaning even easier.

PRATICO is the natural evolution of the TUBO vacuum system. The flexible hose used for cleaning is concealed inside the wall of your home. An entire vacuum system in a single socket.

## Pratico is comprised of:

### *Features*

1. Reversible flap that can be painted
2. Reversible PRATICO socket
3. Temporary cover for installation
4. PRATICO socket frame for plasterboard walls





## Pratico

### The advantages of PRATICO

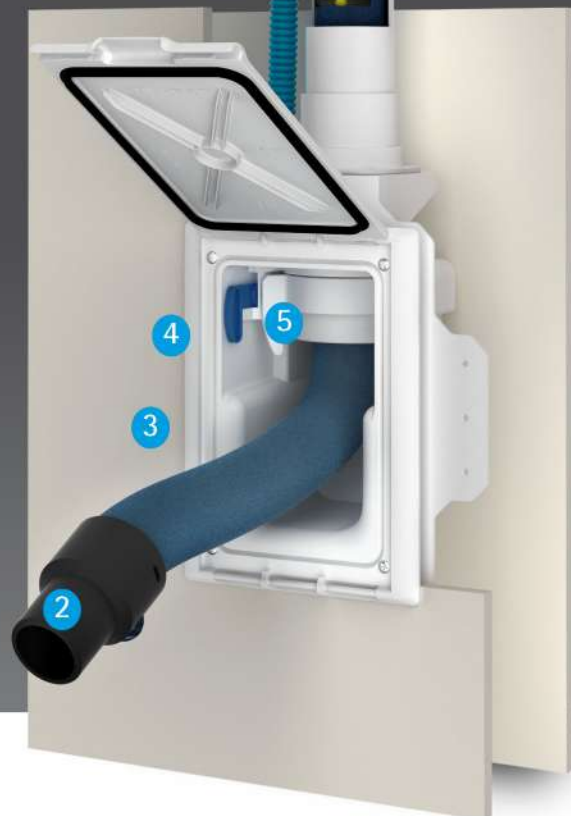
1. **EASY TO USE:** No need to carry, wind-up or put away the hose after cleaning.
2. **FAST:** Even faster cleaning. With a simple gesture the flap is opened, the hose is pulled out and PRATICO is ready to use.
3. **TAKES UP LITTLE SPACE:** The hose is concealed in the wall. There is no need for a cupboard to store it in.



Cleaning has never been so easy.

## PRATICO components

1. 12 metre hose, complete with cover for sliding and protection.
2. End connector for connection to the grip.
3. PRATICO socket complete with flap.
4. Lever for switching on central vacuum unit.
5. Lever for locking hose.



# Pratico

## Operation

With PRATICO cleaning has never been so easy.

Just 4 simple gestures are needed to use PRATICO:

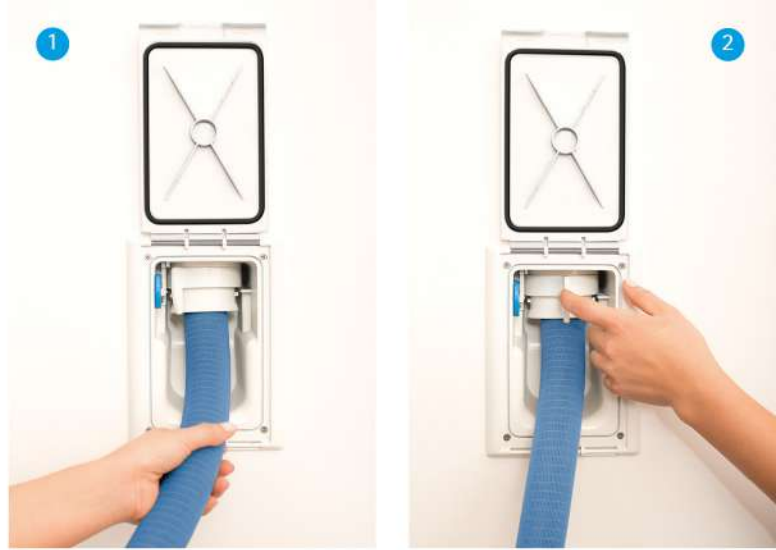
1. Open the flap and extract the quantity of hose required for cleaning.
2. Lock the hose using the dedicated lever.
3. Switch on the central vacuum unit by moving the BLUE lever to ON.\*
4. Insert the end connector for the hose into the grip.

Another 4 simple operations are required to conceal PRATICO:

5. With the central vacuum unit still operating, approach the socket and release the grip from the hose.
6. Unlock the hose by moving the lock lever.
7. Obstruct the end connector for the hose with the palm of your hand until it is completely rewound.
8. Switch off the central vacuum unit by closing the flap.\*

Quick, easy, clean: Pratico.

\*NOTE: the PRATICO Wireless system is also available, in the event that electrical wiring was not laid during the installation of the system.







*Address:* Hastings 4120, New Zealand

*Phone:* 027 69 287 00

*Email:* [info@tubo.co.nz](mailto:info@tubo.co.nz)

*www.tubo.co.nz*



1985 - 2015

